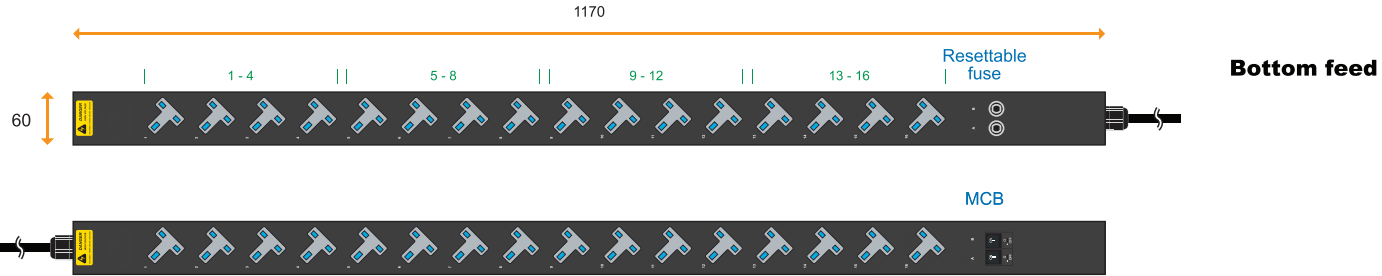


1-Phase basic PDU specification drawing

230V 10A / 13A / 16A / 20A / 32A PDU : UK x 16



Circuit Protection	Code
Fuse	F
MCB	CR

PDU Feed	Code
Bottom	B
Top	T

Chassis Color	Code
Black	1
White	2
Red	3
Blue	4
Green	5
Orange	6
Yellow	7
Purple	8

Standard color: Black



IEC 60309 Inlet



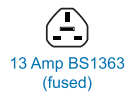
Open end



IEC 60309 Inlet



IEC320 C20



13 Amp BS1363 (fused)



10 Amp IEC320 C14

Model	Circuit Protection
32A model :	Circuit Protection
V16UK45-32A- F _EN/3 B -1	Resettable Fuse x 2
V16UK45-32A- CR _EN/3 T -1	1-pole MCB x 2
20A model :	Circuit Protection
V16UK45-20A- F _OE/3 B -1	Resettable Fuse x 1
V16UK45-20A- CR _OE/3 T -1	1-pole MCB x 1
16A model :	Circuit Protection
V16UK45-16A- F _EN/3 B -1	Resettable Fuse x 1
V16UK45-16A- CR _EN/3 T -1	1-pole MCB x 1
16A model :	Circuit Protection
V16UK45-16A- F _C20/3 B -1	Resettable Fuse x 1
V16UK45-16A- CR _C20/3 T -1	1-pole MCB x 1
13A model :	Circuit Protection
V16UK45-13A- F _BS/3 B -1	Resettable Fuse x 0
V16UK45-13A- CR _BS/3 T -1	1-pole MCB x 1
10A model :	Circuit Protection
V16UK45-10A- F _C14/3 B -1	Resettable Fuse x 1
V16UK45-10A- CR _C14/3 T -1	1-pole MCB x 1

Input Rating : 32Amp, 230V
Cordset : 3 meter 4.0mm sq. H05V V-F cordset
Protection : 16A resettable fuse or 16A hydraulic MCB x 2
Circuit A : Output 16A max., UK #1-8
Circuit B : Output 16A max., UK #9-16
Weight : Net 3.9 Kg / Gross 4.5 Kg

Input Rating : 20Amp, 230V
Cordset : 3 meter 2.5mm sq. H05V V-F cordset
Protection : 20A resettable fuse or 20A hydraulic MCB x 1
Circuit : Output 20A max., UK #1-16
Weight : Net 3.9 Kg / Gross 4.5 Kg

Input Rating : 16Amp, 230V
Cordset : 3 meter 1.5mm sq. H05V V-F cordset
Protection : 16A resettable fuse or 16A hydraulic MCB x 1
Circuit : Output 16A max., UK #1-16
Weight : Net 3.5 Kg / Gross 4.1 Kg

Input Rating : 16Amp, 230V
Cordset : 3 meter 1.5mm sq. H05V V-F cordset
Protection : 16A resettable fuse or 16A hydraulic MCB x 1
Circuit : Output 16A max., UK #1-16
Weight : Net 3.5 Kg / Gross 4.1 Kg

Input Rating : 13Amp, 230V
Cordset : 3 meter 1.5mm sq. H05V V-F cordset
Protection : 13A glass fuse in BS1363 plug or 13A hydraulic MCB x 1
Circuit : Output 13A max., UK #1-16
Weight : Net 3.2 Kg / Gross 3.9 Kg

Input Rating : 10Amp, 230V
Cordset : 3 meter 1.5mm sq. H05V V-F cordset
Protection : 10A resettable fuse or 10A hydraulic MCB x 1
Circuit : Output 10A max., UK #1-16
Weight : Net 3.2 Kg / Gross 3.9 Kg



Operating Temperature : -5 to 60 °C
Storage Temperature : -25 to 65 °C
Operating Altitude : 0 to 2,000 m
Storage Altitude : 0 to 15,000 m
Humidity : 8 to 95% RH, non-condensing

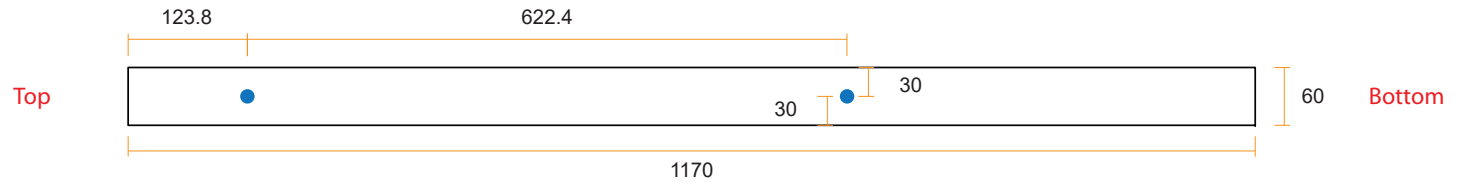
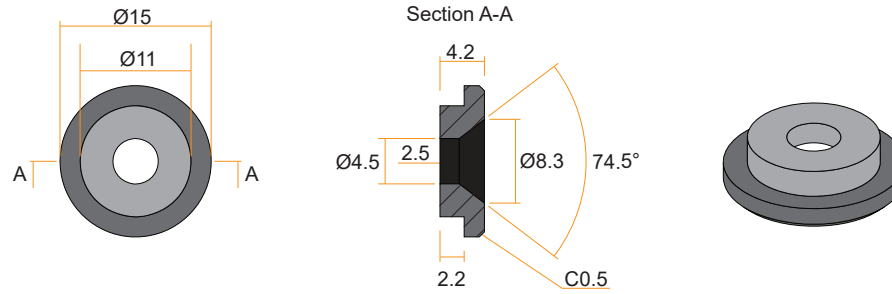
EMC Compliance : CE / EMC
Safety Compliance : CE / LVD & UKCA
Tested to EN 62368-1:2014 / A11:2017 standard
Tested to EN 60730-1:2016 / A1:2019 standard
Environment Compliance : RoHS3 & REACH

With resettable fuse
Product Dimension : 60 (W) x 55 (D) x 1170 (H) mm
Packing dimension (for 2 PDUs) : 270 (W) x 110 (D) x 1800 (H) mm



With hydraulic MCB
Product Dimension : 60 (W) x 70 (D) x 1170 (H) mm
Packing dimension (for 2 PDUs) : 270 (W) x 110 (D) x 1800 (H) mm

VMS Mounting Button

 **x 2** +  **x 2**
M4 Screw
 - Flat head
 - M4x8mm
PEG



VMB Mounting Bracket

 **x 4** +  **x 2**
M3.2 Screw
 - Flat head
 - M3.2x6mm
Bracket

