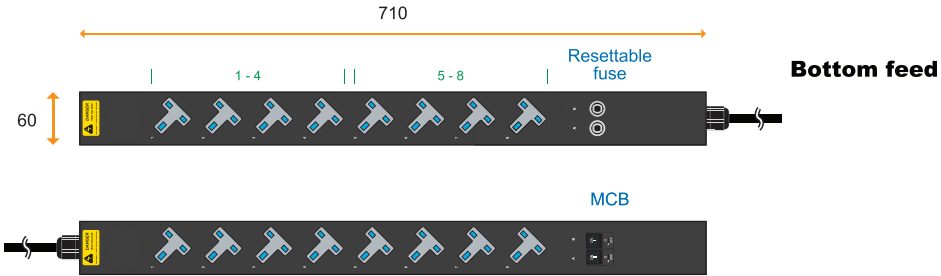


# 1-Phase basic PDU specification drawing

230V 10A / 13A / 16A / 20A / 32A PDU : UK x 8

unit : mm



Circuit Protection	Code
Fuse	<b>F</b>
MCB	<b>CR</b>

PDU Feed	Code
Bottom	<b>B</b>
Top	<b>T</b>

Chassis Color	Code
Black	<b>1</b>
White	<b>2</b>
Red	<b>3</b>
Blue	<b>4</b>
Green	<b>5</b>
Orange	<b>6</b>
Yellow	<b>7</b>
Purple	<b>8</b>

Standard color: Black



IEC 60309 Inlet



Open end



IEC 60309 Inlet



IEC320 C20



13 Amp BS1363 (fused)



10 Amp IEC320 C14

32A model :	Circuit Protection
V8UK45-32A- <b>F</b> _EN/3 <b>B</b> -1	Resettable Fuse x 2
V8UK45-32A- <b>CR</b> _EN/3 <b>T</b> -1	1-pole MCB x 2
20A model :	Circuit Protection
V8UK45-20A- <b>F</b> _OE/3 <b>B</b> -1	Resettable Fuse x 1
V8UK45-20A- <b>CR</b> _OE/3 <b>T</b> -1	1-pole MCB x 1
16A model :	Circuit Protection
V8UK45-16A- <b>F</b> _EN/3 <b>B</b> -1	Resettable Fuse x 1
V8UK45-16A- <b>CR</b> _EN/3 <b>T</b> -1	1-pole MCB x 1
16A model :	Circuit Protection
V8UK45-16A- <b>F</b> _C20/3 <b>B</b> -1	Resettable Fuse x 1
V8UK45-16A- <b>CR</b> _C20/3 <b>T</b> -1	1-pole MCB x 1
13A model :	Circuit Protection
V8UK45-13A- <b>F</b> _BS/3 <b>B</b> -1	Resettable Fuse x 0
V8UK45-13A- <b>CR</b> _BS/3 <b>T</b> -1	1-pole MCB x 1
10A model :	Circuit Protection
V8UK45-10A- <b>F</b> _C14/3 <b>B</b> -1	Resettable Fuse x 1
V8UK45-10A- <b>CR</b> _C14/3 <b>T</b> -1	1-pole MCB x 1

Input Rating : 32Amp, 230V  
Cordset : 3 meter 4.0mm sq. H05V V-F cordset  
Protection : 16A resettable fuse or 16A hydraulic MCB x 2  
Circuit A : Output 16A max., UK #1-4  
Circuit B : Output 16A max., UK #5-8  
Weight : Net 2.9 Kg / Gross 3.3 Kg

Input Rating : 20Amp, 230V  
Cordset : 3 meter 2.5mm sq. H05V V-F cordset  
Protection : 20A resettable fuse or 20A hydraulic MCB x 1  
Circuit : Output 20A max., UK #1-8  
Weight : Net 2.9 Kg / Gross 3.3 Kg

Input Rating : 16Amp, 230V  
Cordset : 3 meter 1.5mm sq. H05V V-F cordset  
Protection : 16A resettable fuse or 16A hydraulic MCB x 1  
Circuit : Output 16A max., UK #1-8  
Weight : Net 2.4 Kg / Gross 2.8 Kg

Input Rating : 16Amp, 230V  
Cordset : 3 meter 1.5mm sq. H05V V-F cordset  
Protection : 16A resettable fuse or 16A hydraulic MCB x 1  
Circuit : Output 16A max., UK #1-8  
Weight : Net 2.5 Kg / Gross 2.9 Kg

Input Rating : 13Amp, 230V  
Cordset : 3 meter 1.5mm sq. H05V V-F cordset  
Protection : 13A glass fuse in BS1363 plug or 13A hydraulic MCB x 1  
Circuit : Output 13A max., UK #1-8  
Weight : Net 2.2 Kg / Gross 2.6 Kg

Input Rating : 10Amp, 230V  
Cordset : 3 meter 1.5mm sq. H05V V-F cordset  
Protection : 10A resettable fuse or 10A hydraulic MCB x 1  
Circuit : Output 10A max., UK #1-8  
Weight : Net 2.2 Kg / Gross 2.6 Kg



Operating Temperature : -5 to 60 °C  
Storage Temperature : -25 to 65 °C  
Operating Altitude : 0 to 2,000 m  
Storage Altitude : 0 to 15,000 m  
Humidity : 8 to 95% RH, non-condensing

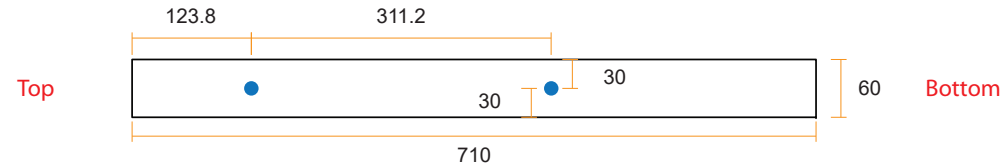
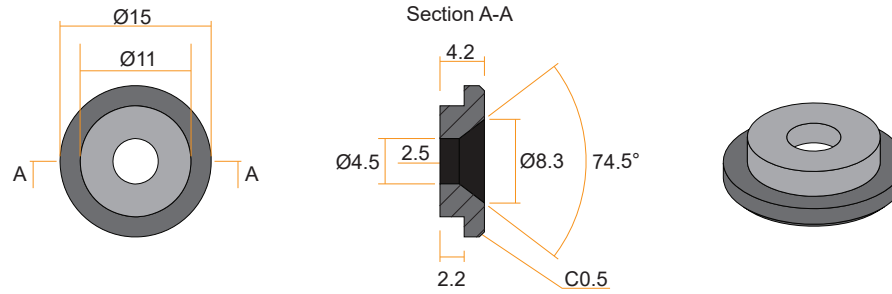
EMC Compliance : CE / EMC  
Safety Compliance : CE / LVD & UKCA  
Tested to EN 62368-1:2014 / A11:2017 standard  
Tested to EN 60730-1:2016 / A1:2019 standard  
Environment Compliance : RoHS3 & REACH

**With resettable fuse**  
Product Dimension : 60 (W) x 55 (D) x 710 (H) mm  
Packing dimension ( for 2 PDUs ) : 270 (W) x 110 (D) x 1100 (H) mm



**With hydraulic MCB**  
Product Dimension : 60 (W) x 70 (D) x 710 (H) mm  
Packing dimension ( for 2 PDUs ) : 270 (W) x 110 (D) x 1100 (H) mm

### VMS Mounting Button

 **x 2** +  **x 2**  
**M4 Screw**  
 - Flat head  
 - M4x8mm  
**PEG**



### VMB Mounting Bracket

 **x 4** +  **x 2**  
**M3.2 Screw**  
 - Flat head  
 - M3.2x6mm  
**Bracket**

